

## How we will make our conference accessible and inclusive

 [getaboutable.com](https://getaboutable.com)



Easy English

## Blue words



Some words in this book are **blue**.

We write what the blue words mean.

## Help with this book



You can get someone to help you

- understand this book
  
- find more information.



Contact information is at the end of this book.

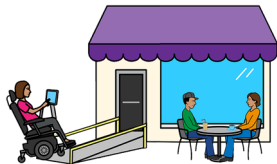
## About this book



This book is from GetAboutAble.



We help tourism operators be **accessible** and **inclusive** for people with disability.



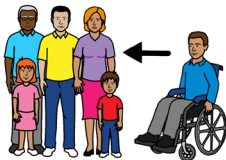
Accessible means services and places are easy for everyone to

- go to

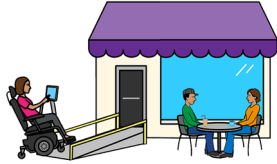
and



- use.



Inclusive means everyone can join in.

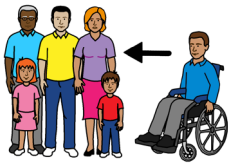


This book is about how we will make our  
Accessible and Inclusive Tourism Conference

- easy for everyone to go to

and

- easy for everyone to join in.



## What is our Accessible and Inclusive Tourism Conference?

Our Accessible and Inclusive Tourism  
Conference is for people in the

- leisure industry

and

- tourism industry
  - for example, tour operators.



We call it **our conference**.



We will have our conference at the Melbourne Convention and Exhibition Centre.



Our conference will be in the Sovereign Room.

We call it **the venue**.



Our conference is on Tuesday 27 August 2024.

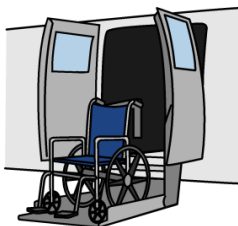
## How will we make our conference accessible and inclusive?



We will ask about your accessibility needs when you register for our conference.



We will work with Travellers Aid to make our conference accessible and inclusive.



Travellers Aid helps people with disability go to places they want to visit.

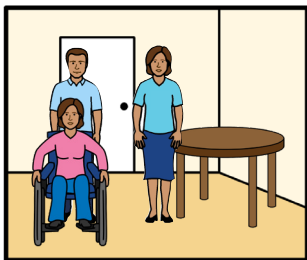


Travellers Aid will have

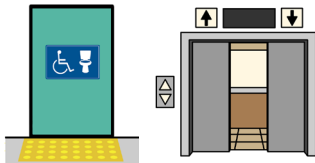
- a buggy service to help people get from tram and Uber stops to our conference



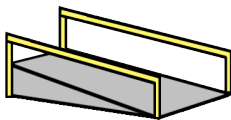
- someone to help people in wheelchairs get from the car park to our conference venue



- 2 team members to help people get around the venue in wheelchairs.



Our venue has accessible toilets and lifts.



Our venue has wheelchair ramps.

## What if you need mobility equipment?

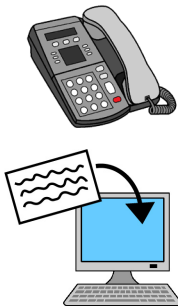


You can hire mobility equipment to use while you are at our conference.



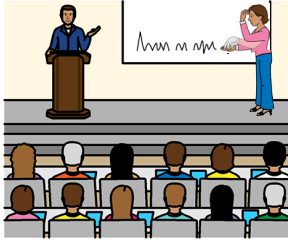
You need to tell the people at the venue if you want to hire mobility equipment.

You must tell them before the end of the work day on 16 August.



Call           03 9235 8000

Email           enquiries@mcec.com.au



## What if you need support to get information at our conference?

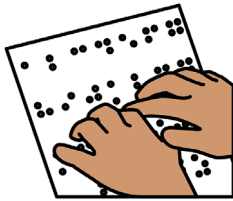
We will have **Auslan interpreters** and **live captions** at our conference.



Auslan interpreters means people who can do Australian Sign Language.



Live captions means you can read what people are saying on a big TV screen.



Our venue has signs in braille.



You can book an assisted hearing telephone or device to use at our conference.



You need to book by the end of the work day on 16 August.

Call            03 9235 8000

Email            [aitcap@getaboutable.com](mailto:aitcap@getaboutable.com)



## What if you need extra support?

We will have disability support assistants who can give you



- support with your meals



- support with personal care, like going to the toilet



- support with communication.



You can use a companion card to bring a support person to our conference.

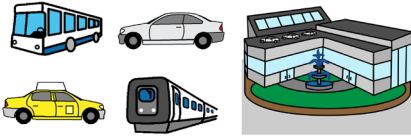


You can contact us if you want to bring an assistance animal to our conference.



Email [aitcap@getaboutable.com](mailto:aitcap@getaboutable.com)

## How can you get to the venue?

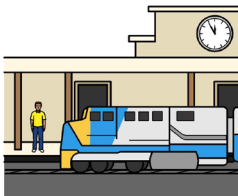


You can get public transport to the venue.

Public Transport Victoria can give you information about



- buses



- trains



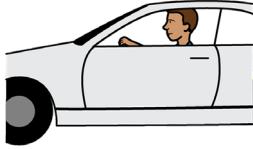
- trams.



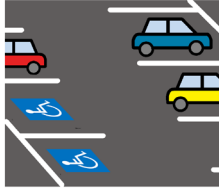
Call 1800 800 007



Website [ptv.vic.gov.au/journey](http://ptv.vic.gov.au/journey)



You can drive to the venue.



There are 20 accessible car parks at the venue.

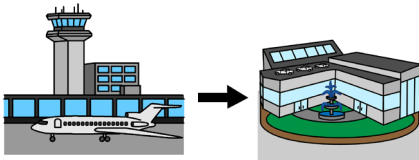


You can book an accesible car park online.



Website

[wilsonparking.com.au/parking-locations/victoria/southbank/melbourne-exhibition-centre-car-park](http://wilsonparking.com.au/parking-locations/victoria/southbank/melbourne-exhibition-centre-car-park)



**How can you get from the airport to the venue?**



You can take a taxi from the airport to the venue.



You can get a bus from the airport to the venue.

## How do you get into the venue?



You can get into the venue through

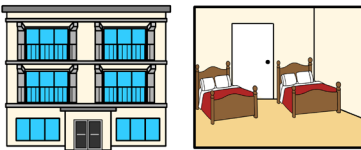
- the Convention Centre Place entrance

or



the Clarendon Street entrance.

## Where can you stay if you are not from Melbourne?



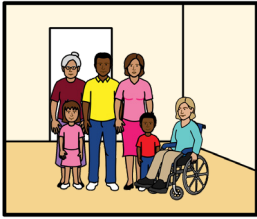
You can find a list of accessible hotels on our website.



Website

[aitcap.getaboutable.com/aitcap-2024/  
melbourne-2024/](http://aitcap.getaboutable.com/aitcap-2024/melbourne-2024/)

## Can you visit the venue before our conference?



The venue will have an **open day** before our conference.



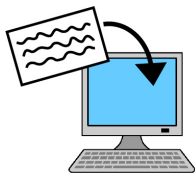
Open day means you can go to the venue to find out where everything is.

For example, where the accessible toilets are.



The open day is on Monday 19 August 2024.

You can email us if you want to go to the open day.

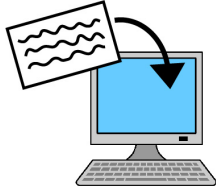


Email [aitcap@getaboutable.com](mailto:aitcap@getaboutable.com)



## More information

For more information contact Nicole Campbell.



Email [aitcap@getaboutable.com](mailto:aitcap@getaboutable.com)

**You can read our full accessibility and inclusion information online.**



Website

[aitcap.getaboutable.com/aitcap-2024/  
accessibility-information/](https://aitcap.getaboutable.com/aitcap-2024/accessibility-information/)

## If you need help with English



Use the free Translating and Interpreting Service or TIS to make a phone call.

You can call the TIS in your language.



Call 131 450

Give the TIS officer the phone number you want to call.

## If you need help to speak or listen



Use the National Relay Service to make a phone call.

You must sign up to the service first.



Website [accesshub.gov.au/nrs-helpdesk](https://accesshub.gov.au/nrs-helpdesk)



Call 1800 555 660

This Easy English document was created by Scope (Aust) Ltd. in July 2024 using Picture Communication Symbols (PCS). PCS is a trademark of Tobii Dynavox, LLC. All rights reserved. Used with permission. This document must not be sold to third parties. The images must not be reused without permission. For more information about the images, contact Scope on 1300 472 673 or visit [scopeaust.org.au](https://scopeaust.org.au)